

HIDEAWAY COTTAGE, 3 POLSCOE, LOSTWITHIEL, PL22 0HS



A beautifully refurbished and surprisingly spacious two bedroom extended cottage boasting a generous landscaped garden, set within the small rural hamlet of Polscoe on the outskirts of Lostwithiel.

Accommodation Comprises:- Entrance porch, lounge, kitchen, dining room, utility area, shower room, landing, bathroom, two double bedrooms, double glazing, electric under floor heating, delightful terraced garden, patio areas, summer house and a garden store.

£1300 PCM - UNFURNISHED

BRIEF DESCRIPTION

'Hideaway Cottage' is a traditional stone built character property (Circa 1850), which has been sympathetically restored and extended by the current vendors. Refurbishment centred around taking the cottage back to its original structure and incorporating lime plaster, re-pointing, local slate and French oak. In 2015 work was completed on an impressive loft conversion to create an additional bedroom, which also involved raising the ridge line of the roof. A few years later the property has benefitted from a single storey extension to the rear, creating a superb dining room, utility area and shower room. The extension features a durable rubber flat roof with a large skylight. The cottage boasts a number of handmade features including the kitchen, pantry cupboard, fitted storage, oak staircase, sapele windows/doors and all internal joinery. The downstairs has slate flooring throughout and engineered oak on the upper two floors.

ACCOMMODATION (All sizes approximate):-

GROUND FLOOR

Entrance

Front entrance door opening into:-

Entrance Porch

Fitted storage and coat hooks. Slate floor. Multi-pane door into:-

Lounge

12' 1" x 11' 11" (3.69m x 3.64m) Double glazed window to front elevation with fitted shutters. Slate floor. Beamed ceiling. Large stone fireplace with fitted 'Esse' cast iron multi-fuel burner on a slate hearth. Built-in retractable TV unit. Shelved alcoves. Door into:-

Kitchen

13' 3" x 7' 0" (4.05m x 2.13m) Attractive range of handmade wall, base and drawer units with sapele worktops. Inset Belfast sink with mixer tap. Smeg electric range cooker. Integrated fridge and dishwasher. Part tiled walls. Slate floor. Beamed ceiling. Part exposed stone wall. Double glazed window to rear elevation. Oak staircase to first floor. Multi-pane door to:-

Dining Room

9' 1" x 8' 10" (2.76m x 2.69m) Slate floor. Large skylight. Stable door to outside. Bi-fold door to:-

Utility Area

Space and plumbing for washing machine. Space for tumble dryer. Space for freezer. Slate floor. Electric consumer unit. Opening into:-

Shower Room

Corner shower cubicle with tiled surround. White low level W.C and wash hand basin. Slate floor. Chrome heated towel rail. Obscure double glazed window to side elevation. Extractor fan.

FIRST FLOOR

Landing

Engineered oak floor. Double glazed window to rear elevation. Oak staircase to second floor. Built-in airing cupboard enclosing a Megaflo hot water storage cylinder. Door to bathroom. Door into:-

Bedroom Two

12' 11" x 12' 0" (3.93m x 3.65m) Double glazed window to front elevation with countryside views. TV aerial point. Engineered oak floor. Small fireplace recess.

Bathroom

7' 3" x 6' 11" (2.21m x 2.12m) Stylish white suite comprising:- Panelled bath with shower over, low level W.C and wash hand basin. Part tiled walls. Obscure double glazed window to rear elevation. Tiled floor. Chrome heated towel rail.

SECOND FLOOR

Access to loft space. Door into:-

Bedroom One

17' 11" x 10' 5" (5.47m x 3.18m) Two double glazed windows to rear elevation. Double glazed window to front elevation. Engineered oak floor. TV aerial and telephone points. Access to eaves storage space. Plumbing has been installed to allow for additional wash facilities or an en-suite, if desired.

OUTSIDE

To the front of the property is a small garden area which is accessed via a shared pathway and a pedestrian wooden gate. The cottage enjoys a pedestrian right of way along the back of the terrace with a gated access to the rear. Paved steps lead up to a private and generous size rear garden arranged on two levels, which is predominantly laid to lawn with two patio areas and mature tree/hedge boundaries. Roadside parking only.

Summer House

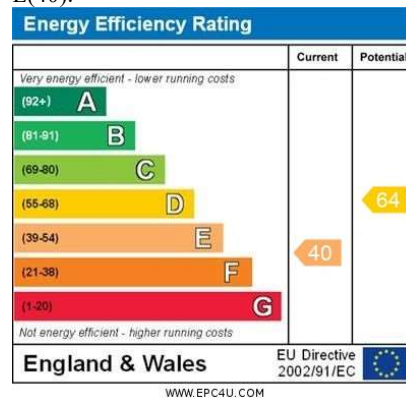
9' 8" x 7' 7" (2.95m x 2.32m) Insulated timber construction with personal door to side and multi-pane french doors to front, opening onto a decked terrace.

Garden Store

6' 7" x 6' 7" (2m x 2m) Timber construction with pitched roof. Personal door to front. Light connected. Weatherproof electrical socket.

ENERGY RATING

E(40).



COUNCIL TAX

Cornwall Council. Tax Band 'B'.

SERVICES

Mains electricity & water. Private drainage (Septic tank).

DEPOSIT

£1500

DIRECTIONS

From Lostwithiel follow the A390 towards Liskeard for approximately half a mile. Turn left opposite Downend Garage and pass by St Winnow School. Continue on this road until the cottages are located on the right-hand side. Enter the wrought iron gate onto the pathway leading towards Number 2 and then go through a wooden gate on the left into Number 3.



LOUNGE



BATHROOM



KITCHEN



MASTER BEDROOM



DINING ROOM



REAR GARDEN



SECOND BEDROOM



REAR ELEVATION

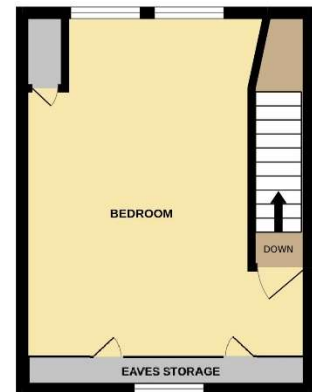
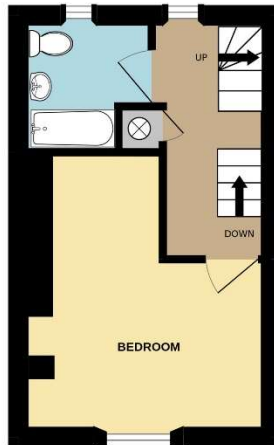
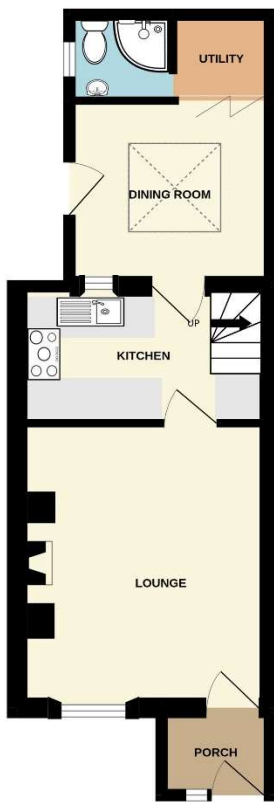


GROUND FLOOR



FIRST FLOOR

ATTIC ROOM



Measurements are approximate. Not to scale. Illustrative purposes only
Made with Metroplan ©2022

Members of the NAEA



St Austell

18 Duke St, St Austell
PL25 5PH
01726 73483
staustell@jefferys.uk.com

Lostwithiel

5 Fore St, Lostwithiel
PL22 0BP
01208 872245
lostwithiel@jefferys.uk.com

Liskeard

17 Dean St, Liskeard
PL14 4AB
01579 342400
liskeard@jefferys.uk.com

ESTABLISHED 1865
Jefferys

CONSUMER PROTECTION FROM UNFAIR TRADING REGULATIONS 2008: The Agent has not tested any apparatus, equipment, fixtures and fittings or services and so cannot verify that they are in working order or fit for the purpose. A Buyer is advised to obtain verification from their Solicitor or Surveyor. References to the Tenure of a Property are based on information supplied by the Seller. The Agent has not had sight of the title documents. A Buyer is advised to obtain verification from their Solicitor. Items shown in photographs are not included unless specifically mentioned within the sales particulars. They may however be available by separate negotiation. Buyers must check the availability of any property and make an appointment to view before embarking on any journey to see a property. IN ACCORDANCE WITH GDPR (GENERAL DATA PROTECTION REGULATION): Please note that all personal information provided by customers wishing to receive information and/or services from the estate agent and the "Experts in Property" of which Jefferys is a member for the purpose of providing services associated with the business of an estate agent but specifically excluding mailings or promotions by a third party. If you do not wish your personal information to be used for any of these purposes, please notify your estate agent.